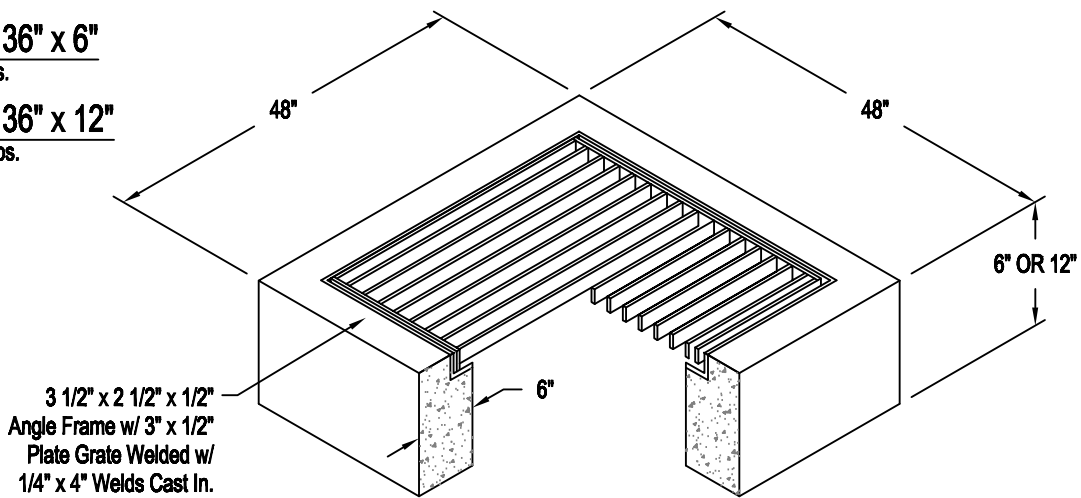


Riser 36" x 36" x 6"

Weight = 520 Lbs.

Riser 36" x 36" x 12"

Weight = 1040 Lbs.



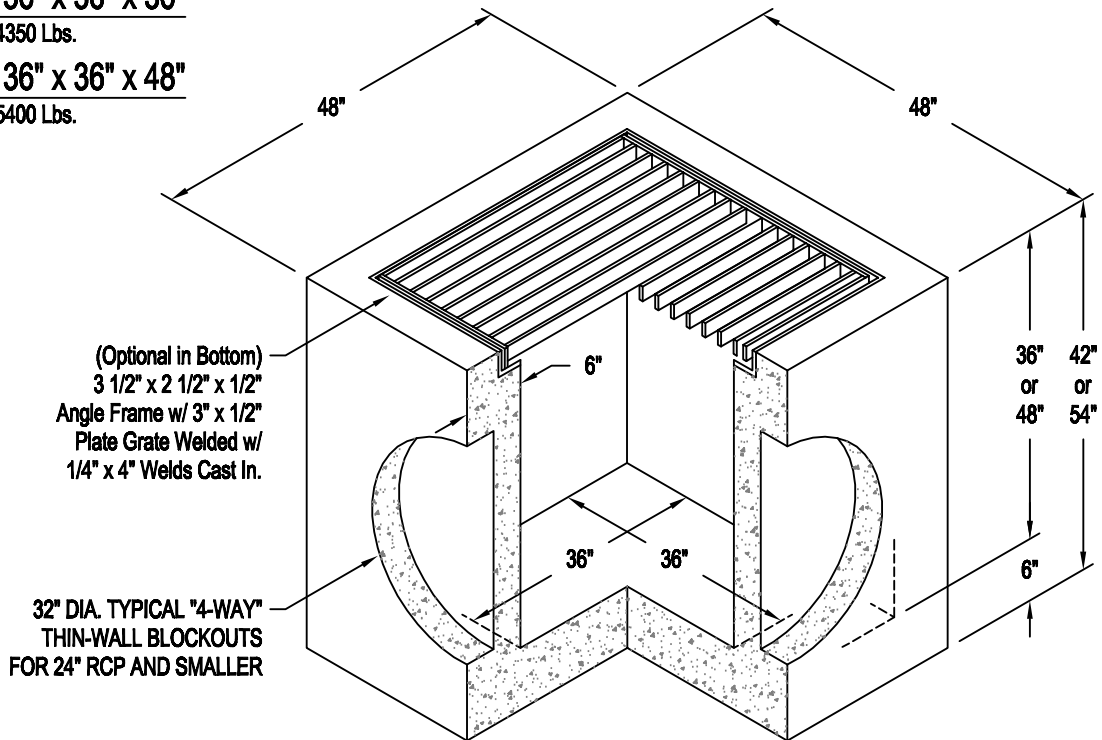
3 1/2" x 2 1/2" x 1/2"
Angle Frame w/ 3" x 1/2"
Plate Grate Welded w/
1/4" x 4" Welds Cast In.

Bottom 36" x 36" x 36"

Weight = 4350 Lbs.

Bottom 36" x 36" x 48"

Weight = 5400 Lbs.



(Optional in Bottom)
3 1/2" x 2 1/2" x 1/2"
Angle Frame w/ 3" x 1/2"
Plate Grate Welded w/
1/4" x 4" Welds Cast In.

32" DIA. TYPICAL "4-WAY"
THIN-WALL BLOCKOUTS
FOR 24" RCP AND SMALLER

SPECIFICATIONS

REINFORCEMENT: GRADE 60 NO. 4 STEEL REBAR TO CONFORM TO ASTM A-615 ON REQ'D CENTERS. GRADE 60.

CONCRETE: CONCRETE DESIGN TO BE CLASS 1 WITH 28 DAY STRENGTH OF 4500 PSI. BOTTOMS TO BE OF MONOLITHIC CONSTRUCTION AS SHOWN.

CASTINGS: FRAME AND GRATES CAST INTO RISERS AND/OR BOTTOMS TO BE AS SHOWN IN PLANS AND SPECS

PRECAST OF HOUSTON

"WE DELIVER WHAT OTHER PEOPLE PROMISE"

PHONE : (281) 367-1456

FAX : (281) 419-7860

11393 SLEEPY HOLLOW RD.

CONROE, TX 77385

SCALE : ****

DATE :08/03

APPROVED BY :

DRAWN BY :

RON

36" x 36" Type "C" Inlet

DRAWING NUMBER : InITyC-Valley

REV. :
0